

## Leading the way to Beijing

**Well ahead of the Beijing 2008 Olympic Games, GGS-Spectrum has expanded and legally incorporated as a 100% owned subsidiary, our existing joint venture in Beijing, China. GGS-Spectrum (BJ) Oil International Ltd was formally incorporated in Q4, 2007 after operating for over 2 years as a joint venture remote centre.**

GGG-Spectrum (BJ) now employs 10 geoscientists working out of a modern office suite in the Wangjing district of Beijing. The centre is managed by Katie Zhao who has more than 20 years

experience in Seismic Data processing and project management, 15 years of which were spent with BGP.

The locally based geophysicists have received intensive training in all aspects of GGS-Spectrum's internationally proven seismic processing techniques. They are currently providing "on-line" support to our Houston, London, Cairo and Tripoli processing centres. With this thorough and extensive knowledge of GGS-Spectrum's data processing techniques, the team is now well positioned to provide seismic services on behalf of locally based clients in addition to continuing the on-line support for other GGS-Spectrum data processing centres.



*The entrance to the new GGS-Spectrum (BJ) International Oil Technology Inc Suite in the Wangjing District of Beijing*

## \$10 MILLION PROJECTS FOR GGS ATLANTIC

**Our seismic vessel, the GGS Atlantic, has been awarded contracts to conduct two acquisition programmes during the first half of 2008. The total value of the two projects ranges between US \$10 - \$13 million depending on options selected by our clients.**

Reliance Industries Ltd has awarded a contract offshore the East Coast of India to acquire a minimum of 7,200 km with options for a further 3,100 km depending on weather and productivity. Immediately following the completion of this project the Atlantic will commence a 1,400 km programme for the Korea National Oil Company offshore the coast of Yemen which is scheduled to be undertaken during June and July.

of the recently refurbished GGS Atlantic and the interest it has generated. Trond added: "The vessel now has the capacity to provide reliable and cost effective 2D and small footprint 3D acquisition. She recorded excellent productivity recently in the US Gulf of Mexico before mobilising to India".



*The GGS Atlantic which is currently en route to India.*

Trond Christofferson, EVP Seismic Operations, is excited about the prospects

### COME & SEE US AT THE FOLLOWING CONFERENCES IN Q1, 2008

GEO 2008	BAHRAIN	3 - 5 March
*APPEX	LONDON	5 - 7 March
SYROIL	DAMASCUS	7 - 10 April
NELP VII ROADSHOWS	VARIOUS	Feb & March
AAPG	SAN ANTONIO	20 - 23 April

*\*Glyn Roberts of GGS-Spectrum will be one of the featured speakers at the upcoming APPEX 2008 conference to be held at the Business Design Centre in London.*

*Glyn's talk is entitled "The Eastern Mediterranean Potential" and describes the prospectivity of the Levantine basin based on the East Med 2000 PSDM Multi-Client data.*

# GGG-Spectrum assists DGH, India with promotion of NELP VII



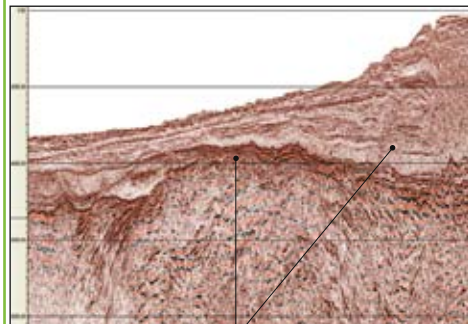
On January 8th in Mumbai the Indian Government, through DGH (Director General Hydrocarbons) launched a series of international roadshows to promote the seventh round of auctioning under the New Exploration Licensing Policy (NELP) which offers 57 blocks to licence for oil and gas exploration.

Most of the roadshows have now taken place in Mumbai, London, Houston and Calgary. Additional roadshows are planned for similar events in Perth, Singapore and Dubai.

GGG-Spectrum has assisted DGH at each of the roadshows by presenting a paper on the hydrocarbon prospectivity and play types identified off the West Coast. The presentation is based on the reprocessing of 12,000 km of regional seismic data undertaken at GGS-Spectrum's UK processing centre.

The regional reprocessing project is being undertaken in conjunction with DGH to provide technical data to support the NELP VII bid round.

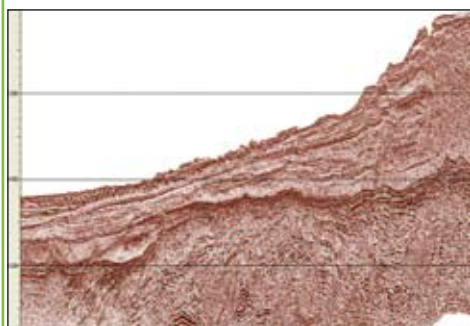
## PSDM displayed in Depth



Note: Events closing in Depth. Timing Lines at 2000m interval

The processing sequence selected for the regional data includes Radon Demultiple, PSTM and PSDM. The GGS-Spectrum presentation at the NELP roadshows illustrates the dramatic improvements gained by the reprocessing particularly beneath the Deccan Trap Basalts which previously masked the deeper Mesozoic section. This has led to the recognition of new play concepts in the Cretaceous and Jurassic of the deep offshore area. Other play types which can be identified from the reprocessed data include deep graben reefs, onlaps, drapeovers and even DHI's in both the Kerlan-Konken and Mumbai Offshore blocks which are currently being offered in NELP VII.

## PSDM displayed in Time



Key: PSDM - Pre-Stack Depth Migration

## Breaking news...

### MORE TECHNOLOGY...

In a number of recent issues of GGS-Spectrum News, we have described the various technological developments from our own research team and also our various affiliates. These have included the Inversion of High Definition Wavefield Imaging as developed with Dr Norman Neidell, Tau Migration and Straight Ray Datuming with Tariq Alkhalifah, in addition to various internally developed techniques. Our UK based research team are currently incorporating Delphi sparse linear inversion into our existing SPA SRME demultiple software. Henk Innee, Senior Programmer with GGS-Spectrum comments that "the Delphi sparse linear inversion will not only improve our existing SRME multiple estimation and subtraction, but most importantly will give us full 3D SRME prediction capability".

### Leo Snowman joins

Leo Snowman has joined GGS-Spectrum in the Multi-Client Business Development & Sales area. He brings with him over 30 years of experience in the seismic industry of which 16 years were devoted to multi-client program development. He has organized multi-client 3D surveys in the Gulf of Mexico as well as programs in Australasia, China and Latin America. Based in Houston, he is investigating business opportunities for GGS-Spectrum in various parts of the globe.

## HOUSTON CELEBRATES 20TH BIRTHDAY



On January 5th, our Houston office celebrated 20 years of successful operations. Joining in the celebrations were the CEO of GGS-Spectrum, Knut Oversjoen, MD of the UK office, David Rowlands and EVP of Seismic Operations, Trond Christofferson.



Pictured above are longstanding employees who have been with the company from year 1. They are from left to right Pam Cuttell, Jeff Anderson, Helen Schubert, Mark Johnson and Marilyn Eppler.

Staff took time off from their busy schedules to toast this important milestone and to recognize the long-standing service of five of the company's original employees who are still with the organization. These include Marilyn Eppler, Jeff Anderson, Helen Schubert, Pam Cuttell and Mark Johnson who all joined the office between January and November 1988. Global Data Processing Manager Andy Cuttell notes: "we wish to take this opportunity to thank the many people who have contracted our services over the last 20 years. As we grow, we seek to continually improve the standard of services we provide to our clients and to remain on the cutting edge of technology. We look forward to providing a similar outstanding and personable service to our clients during the next 20 years."

## Contacts

For Multi-Client enquiries, please email: [mc-uk@ggs-spectrum.com](mailto:mc-uk@ggs-spectrum.com) or [mc-us@ggs-spectrum.com](mailto:mc-us@ggs-spectrum.com)

For Seismic Data Processing enquiries, please email: [dp-uk@ggs-spectrum.com](mailto:dp-uk@ggs-spectrum.com) or [dp-us@ggs-spectrum.com](mailto:dp-us@ggs-spectrum.com)

Spectrum House  
56 Goldsworth Road  
Woking  
GU21 6LE  
UK  
Tel: +44 1483 730201  
Fax: +44 1483 762620

16225 Park Ten Place, Suite 300  
Houston  
Texas 77084  
USA  
Tel: +1 281 647 0602  
Fax: +1 281 647 0926

[www.ggs-spectrum.com](http://www.ggs-spectrum.com)